

Fitting Instructions for the Trackless Barrier System

TOOLS REQUIRED:-

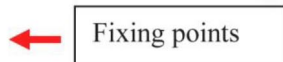
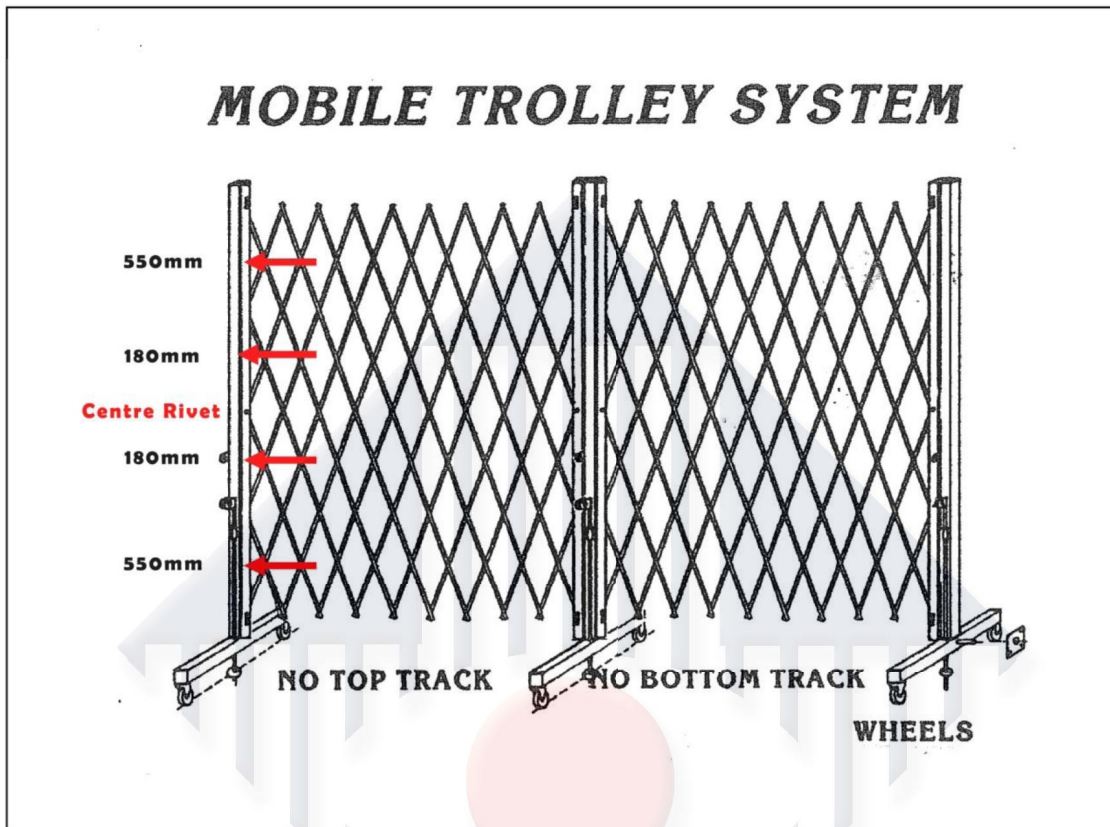
Electric Drill
7mm Masonry Drill Bit
4mm Steel Drill Bit
Tape Measure and Pencil
Screw Drivers

FIXINGS REQUIRED:- Not Supplied

Fixing Lattice Grille to Trolley (Per Side) - 4 x 1" x 10 Self Tapping Screws Per Side
Fixing Lattice Grille to Wall (Per Side) - 4 x 3" x 12 Hardened Wood Screws and Brown Plugs
Fixing the Lock - One way Security Screws are included in the Lock Pack. We advise you not to use these and use a normal ½" x 10 Countersunk Self Tappers.

- ✓ Unpack and Check that all ordered components are on site
- ✓ Pre Drill the Back of the Lattice Grille "U" Section with a 4mm hole as follows;
 - 180mm both sides of the centre rivet
 - 550mm both sides of the centre rivet
- ✓ Align the Bottom of the Lattice Grille "U" Channel with the top of the trolley cross member. (If the final height of the bottom of the gate needs to be lower then move the "U" channel lower and fix in place)
- ✓ Stand the Trolley upright and open the Lattice Grille, hold or clamp in place. Mark the holes through the back of the "U" Channel and Mark the Trolley. Drill the holes in the trolley and fix with self-tapping screws, starting from the top down.

MOBILE TROLLEY SYSTEM

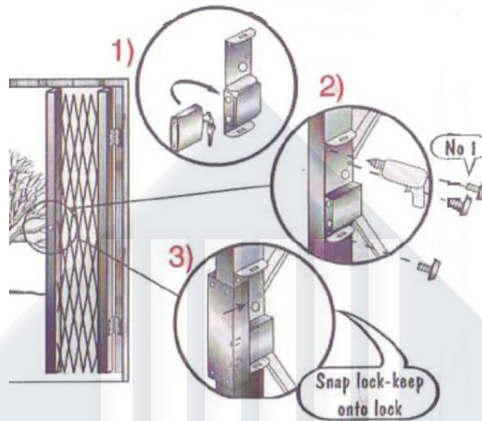


Fitting the Lock

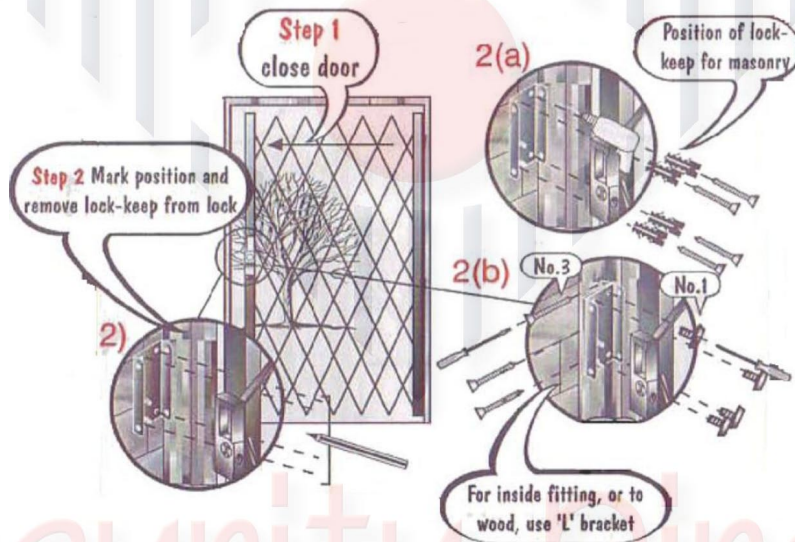
- ✓ The Barriers System may come with One Lock or Two Locks depending on the order. The Lock does come with its own One Way Security Screws. **If you are unsure then don't use these screws as once they are fixed you can't get them out.**



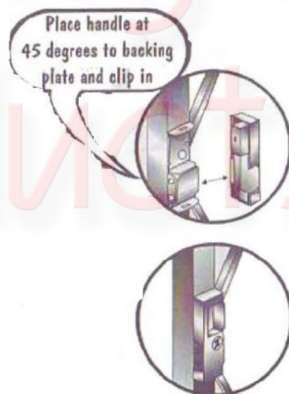
STEP 1



STEP 2



STEP 3



Security Direct
Products Ltd